

Graduate School of Education  
and Faculty of Education,  
Kyoto University

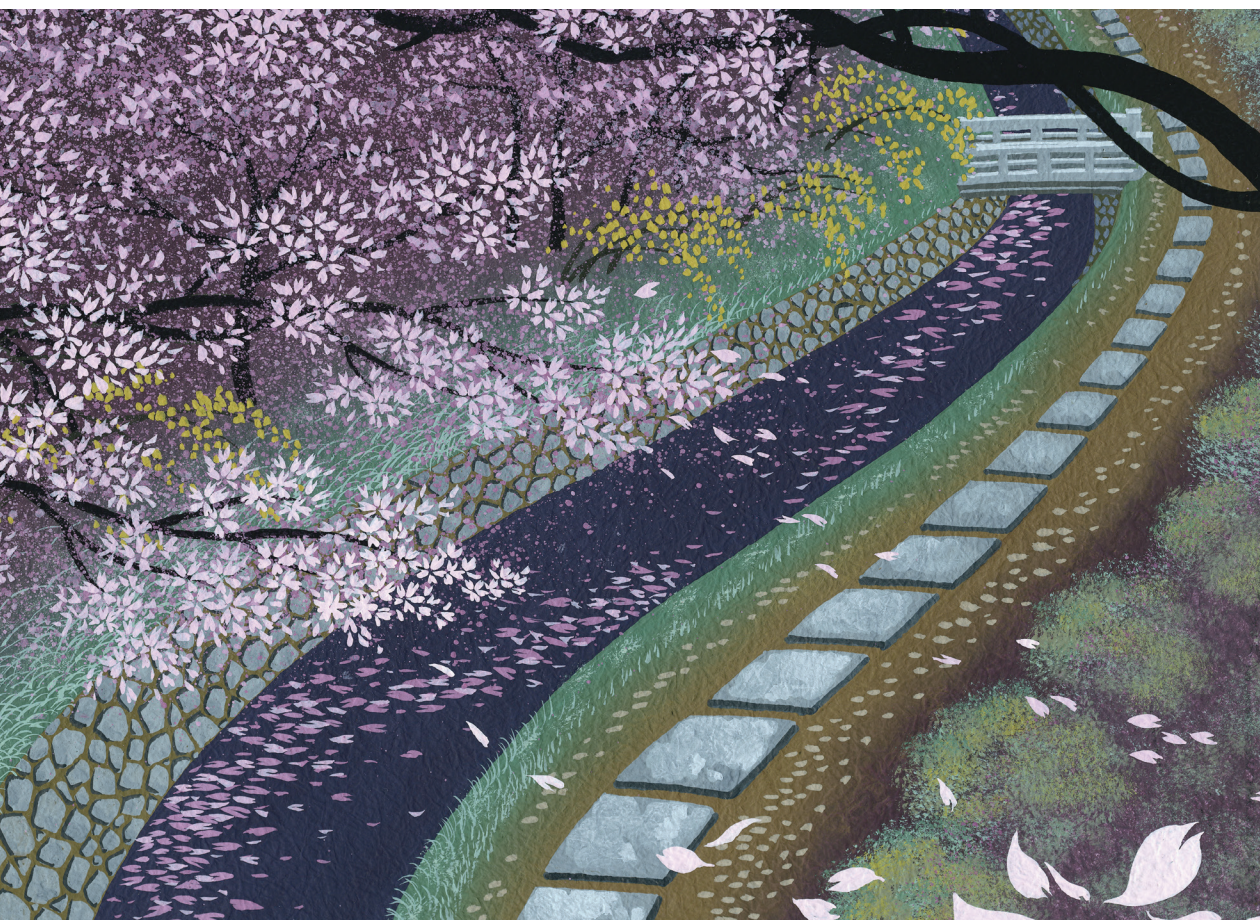
2025



京都大学  
大学院教育学研究科・教育学部



Global Education Office  
Graduate School of Education, Kyoto University



Tetsugaku-no-michi

## Contents

- P.2 Message from the Dean
- P.3 About the School
- P.5 Graduate School of Education
- P.15 Faculty of Education
- P.17 Affiliated Centers and Facilities
- P.18 International Outlook
- P.19 Access and Contact

学修 ● ガクシュウ

# 教育学部



# Message from the Dean



**Satoru SAITO**

Dean and Professor

Education is an activity based on the premise that humans change. The irreversibility of that change creates a tension which requires us to think critically about educational activity. This is one of the reasons why the discipline of education is considered essential, as we continually seek pathways to create and share knowledge amid constant change.

The objectives of the Graduate School of Education and the Faculty of Education are: to cultivate specialist knowledge of the mind, humans, and society; to form a breadth of perspectives and understandings; to nurture multifaceted and comprehensive thinking and critical judgement; and, to foster an attitude of protecting and promoting humanity. We do this not only through our educational practice, but also by conducting studies in a variety of disciplines related to education and human nature, thereby contributing to the harmonious coexistence of global societies.

As technological innovation, including AI and deep learning, raises new questions about how we learn, what is culture, the role of humans, and indeed, what it is to be human, we are pressed to fundamentally reexamine the relationship between humans and education. This demands developing new educational methods and designing new systems for the next generation. To further develop as a center for education research that can meet these social demands, our Graduate School and Faculty have recently reorganized to more flexibly link and cooperate across disciplines and areas, while building on the accumulation and traditions of the past.

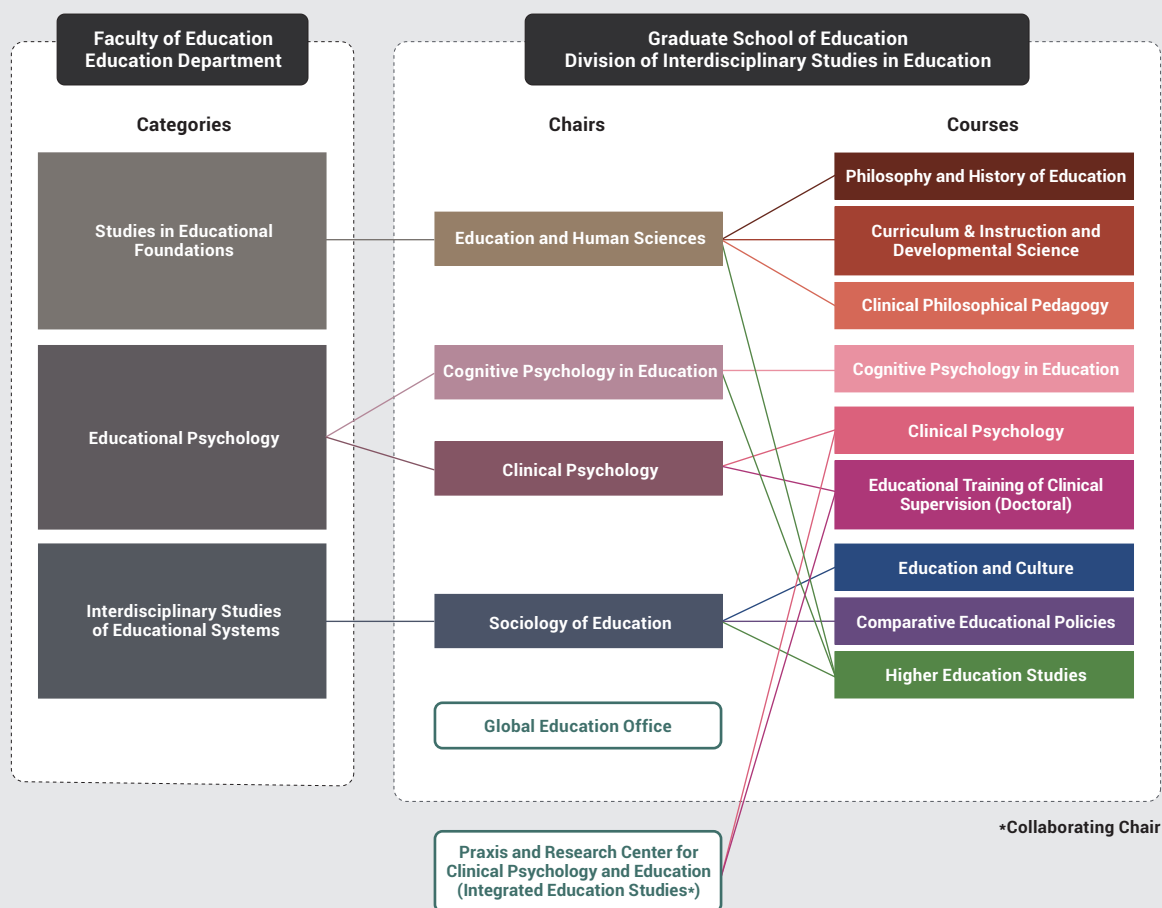
We at the Graduate School of Education and the Faculty of Education of Kyoto University continue to maintain our founding principles, pursuing academic research supported by a unique partnership that has never wavered while at the same time restructuring to respond to the demands of the times and society. Together, students and faculty members will continue to promote interdisciplinary research based on their areas of expertise, thereby fostering individuals who will lead education research and educational practice from a global perspective.

考  
究

コ  
ウ  
キ  
ュ  
ウ

# About the School

Kyoto University's Graduate School of Education and the Faculty of Education offer bachelor's, master's, and doctoral programs through its academic units: the *Education Department* (undergraduate Faculty of Education) with three categories and the *Interdisciplinary Studies in Education Division* (Graduate School) with five chairs. The Global Education Office brings global perspectives into the curricula and facilitates international outreach and exchange.



## Priorities

The Graduate School of Education and the Faculty of Education are dedicated to promoting the following goals as our top priorities in research and teaching practices:

- To guide students to acquire expert knowledge about human minds, human relations, and social foundations of education;
- To train students to develop advanced research skills integrating theory and practice, as well as acquire comprehensive approaches to understanding complex human and societal phenomena;
- To encourage students to become an active change agent for the betterment of local and global society;
- To cultivate students' competence to critically assess multiple values, respond flexibly to difficulties and differences, and evaluate and synthesize diverse opinions.





## Researching Human Minds, Human Relations, and Social Foundations of Education

### History at a Glance

- 1897 Kyoto Imperial University founded
- 1949 Faculty of Education established
- 1953 Graduate School of Education established
- 1955 *Kyoto University Research Studies in Education* first published
- 1976 Three departments, *Education*, *Educational Psychology*, and *Educational Sociology*, formed in the Faculty of Education
- 1980 Center for Counseling and Psychotherapy established
- 1997 Praxis and Research Center for Clinical Psychology and Education established
- 1998 Three categories, *Studies on Educational Foundations*, *Educational Psychology*, and *Interdisciplinary Studies of Education System*, reformed in the Faculty of Education
- 2017 Global Education Office established
- 2018 A newly unified division, *Interdisciplinary Studies in Education*, established in the Graduate School of Education



# Graduate School of Education

**Education and Human Sciences**

**Cognitive Psychology in Education**

**Clinical Psychology**

**Praxis and Research Center for  
Clinical Psychology and Education**

**Sociology of Education**

**Higher Education Studies**

**Global Education Office**



The Graduate School of Education aims at nurturing individuals who are capable of applying specialized knowledge and advanced research skills to find solutions to complex human and social challenges. The *Division of Interdisciplinary Studies in Education*, will support this mission by connecting scientific inquiry and practical wisdom through research and education. Graduate students enrolled in the Division of Interdisciplinary Studies in Education belong to one specialized area out of nine courses.

The *Global Education Office*, serves as an interdisciplinary teaching and research hub. The office offers training experiences that cut across disciplinary boundaries and offers specialized curricula that expose students to global perspectives into education. Some of its ongoing research projects critically analyze cultural models of education and develop Japanese models of education culture. These projects are pursued through collaborative partnerships with domestic and international research institutes.



# Interdisciplinary Studies in Education Division

## Education and Human Sciences

**Education and Human Sciences Chair** studies education and human beings from diverse perspectives. Research agendas are wide ranging, including but not limited to theory building for curriculum development and instructional designs, pedagogy and educational assessment, historical analyses of education, empirical studies on human minds and brain development, philosophical investigations into social and global issues, and education studies on cultural aspects including arts, religions, and customs.



### **Prof. Takeshi KOMAGOME**

Research focus:  
Japanese history of education, history of  
Japanese colonial education, post-colonial  
studies

e-mail: komagome.takeshi.5m \*kyoto-u.ac.jp



### **Prof. Masako MYOWA**

Research focus:  
Development of social cognition, comparative  
cognitive science, mother-infant relationship



### **Prof. Kanae NISHIOKA**

Research focus:  
Curriculum development, classroom  
instruction, educational assessment

e-mail: nishioka.kanae.2v \*kyoto-u.ac.jp



### **Prof. Naoko SAITO**

Research focus:  
Philosophy of education, American philosophy

e-mail: saito.naoko.6v \*kyoto-u.ac.jp



### **Prof. Tomoko TANAKA**

Research focus:  
Japanese modern history, history of higher  
education institution

e-mail: tanaka.tomoko.5s \*kyoto-u.ac.jp



### **Assoc. Prof. Terumasa ISHII**

Research focus:  
Curriculum development, classroom  
instruction, educational assessment

e-mail: ishii.terumasa.3w \*kyoto-u.ac.jp



### **Assoc. Prof. Niels VAN STEENPAAL**

Research focus:  
Japanese (intellectual) history of education,  
media history, moral culture

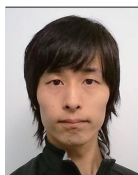
e-mail: vansteenpaal.niels.5w \*kyoto-u.ac.jp



### **Assoc. Prof. Yuzo HIROSE**

Research focus:  
Philosophy of education, moral education,  
pedagogical anthropology

e-mail: hirose.yuzo.3n \*kyoto-u.ac.jp



### **Assoc. Prof. Hironori AKECHI**

Research focus:  
Social cognition, morality, communication,  
autism spectrum



### **Assoc. Prof. Yoshimi OKUMURA**

Research focus:  
Curriculum development, classroom  
instruction, educational assessment

e-mail: okumura.yoshimi.4t \*kyoto-u.ac.jp



### **Assoc. Prof. Koichiro MISAWA**

Research focus:  
Philosophical anthropology,  
philosophy of education

e-mail: misawa.koichiro.5i \*kyoto-u.ac.jp



### **Program-Specific Junior Assoc. Prof. Yukari TANAKA**

Research focus:  
Development of social cognition,  
parent-infant relationship,  
brain development of parent and infant



### **Program-Specific Junior Assoc. Prof. Michiko MATSUNAGA**

Research focus:  
Developmental Psychology, Neuroscience

e-mail: matsunaga.michiko.4s \*kyoto-u.ac.jp

(replace \*with@)



## Interdisciplinary Studies in Education Division

# Cognitive Psychology in Education

(<http://cogpsy.educ.kyoto-u.ac.jp/en/>)

**Cognitive Psychology in Education Chair** focuses on mental functions such as memory, thought, emotion, language, knowledge acquisition, decision-making, and social cognition, through basic research on learning processes, and interpersonal understanding using empirical methods.



### **Prof. Emmanuel MANALO**

Research focus:  
Educational psychology, cognitive psychology,  
thinking skills

e-mail: manalo.emmanuel.3z \*kyoto-u.ac.jp



### **Prof. Satoru SAITO**

Research focus:  
Human memory, language, executive control,  
semantic cognition

e-mail: saito.satoru.2z \*kyoto-u.ac.jp



### **Assoc. Prof. Yusuke TAKAHASHI**

Research focus:  
Personality psychology, developmental  
psychology, educational  
psychology, behavioral genetics

e-mail: takahashi.yusuke.3n \*kyoto-u.ac.jp



### **Junior Assoc. Prof. Joonha PARK**

Research focus:  
Cross-cultural psychology, self,  
well-being, acculturation,  
environmental issues

e-mail: park.joonha.6n \*kyoto-u.ac.jp

### **Assist. Prof. Kazuki SAWADA**

Research focus:  
Educational Psychology, Cognitive Science

e-mail: sawada.kazuki.2p \*kyoto-u.ac.jp

(replace \* with @)



## Interdisciplinary Studies in Education Division

# Clinical Psychology

**Clinical Psychology Chair**, in collaboration with the Praxis and Research Center for Clinical Psychology and Education (Collaborating Chair), promotes professional education and training for psychological assessment and psychotherapy, as well as empirical and theoretical research on psychotherapeutic modalities. The chair offers the Course of Educational Training of Clinical Supervision, the first doctoral program of its kind in Japan, for clinical practitioners to conduct theoretical and empirical research on instruction and supervision methods in clinical practice.

---

### **Prof. Yasuhiro TANAKA**

Research focus:  
Jungian psychology, archetypal psychology, clinical psychology

---

### **Prof. Kosuke TSUIKI**

(Institute for Research in Humanities)  
Research focus:  
Lacanian psychoanalysis

---

### **Assoc. Prof. Minako NISHI**

Research focus:  
Clinical psychology, psychoanalysis,  
history of psychoanalysis

---

### **Assoc. Prof. Toshikazu, NOGUCHI**

Research focus:  
Clinical psychology, jungian psychotherapy, dream analysis,  
psychotherapy and culture

---

### **Assoc. Prof. Kotaro UMEMURA**

Research Focus:  
Clinical psychology, psychotherapy for adolescents,  
somatization

---

### **Program-Specific Assist. Prof. Hidenori KIYOSHIGE**

Research focus:  
Clinical psychology, psychotherapy





## Interdisciplinary Studies in Education Division

# Praxis and Research Center for Clinical Psychology and Education

(Collaborating Chair)

**Praxis and Research Center for Clinical Psychology and Education**, fully accredited by the Ministry of Education, Science, Sports and Culture since 1980, promotes cutting-edge research on highly professional clinical psychology practice for mental and emotional issues. The center offers various training and educational opportunities, including highly advanced recurrent education programs and continuing education courses for clinical psychology practitioners, educators, and professionals in the fields.

---

### Prof. Himeka MATSUSHITA

Research focus:

Clinical psychology, image, psychic reality

---

### Assoc. Prof. Chihiro HATANAKA

Research focus:

Clinical Psychology,  
psychological tendencies of the youth generation

---

### Program-Specific Assist. Prof. Chisato MURAKAMI

Research focus:

Clinical psychology, psychotherapy



## Interdisciplinary Studies in Education Division

# Sociology of Education

**Sociology of Education Chair** consists of two courses:

### Education and Culture Studies Course

- Cultural sociology, historical sociology
- Social research, empirical sociology
- Media culture studies, library and information sciences

### Comparative Educational Policy Studies Course

- Comparative education
- Educational administration
- Cultural policy and community education



#### **Prof. Hirotaka NANBU**

Research focus:  
Comparative education, higher education in East Asia

e-mail: nanbu.hirotaka.5m \*kyoto-u.ac.jp



#### **Prof. Mayuko SANO**

Research focus:  
Cultural policy, history of cultural exchange, cultural history of diplomacy

e-mail: sano.mayuko.7s \*kyoto-u.ac.jp



#### **Prof. Takeshi OKABE**

Research focus:  
Sociology of education, sociology of crime and deviance, criminology



#### **Prof. Yoshiaki FUKUMA**

Research focus:  
historical sociology, history of Japanese media

e-mail: fukuma.yoshiaki.7n \*kyoto-u.ac.jp



#### **Assoc. Prof. Rio TAKEUCHI**

Research focus:  
Sociology of education, historical sociology, sociology of culture



#### **Assoc. Prof. Taro KAINUMA**

Research focus:  
Educational administration, digitization of education

e-mail: kainuma.taro.7u \*kyoto-u.ac.jp



#### **Assoc. Prof. Yusuke FUKUI**

Research focus:  
Library and information science, public libraries in Japan, intellectual freedom in libraries

e-mail: ku.lis.office \*mail2.adm.kyoto-u.ac.jp

#### **Assoc. Prof. Kota TOMA**

Research focus:  
Sociology of education, family sociology, welfare sociology

e-mail: toma.kota.6t \*kyoto-u.ac.jp



#### **Junior Assoc. Prof. Takahito OKUMURA**

Research focus:  
Lifelong education, social education, workers' education

e-mail: okumura.takahito.4i \*kyoto-u.ac.jp

(replace \* with @)



## Interdisciplinary Studies in Education Division

# Higher Education Studies

**Higher Education Studies Course** offers opportunities for students to be exposed to multi-faceted approaches to research on higher education such as educational technology, pedagogy, sociology of education, and comparative education. Graduate students are invited to explore issues in teaching and learning, curriculum design, assessment, educational system, educational technology, and professional development of faculty, staff, and students. We aim to offer empirical and/or holistic research and educational experiences so that students completing this Course would have the ability to understand fast changing higher education and related issues, as well as lead a way forward.



**Prof. Kayo MATSUSHITA**

Research focus:  
Curriculum, teaching & learning, and  
assessment & evaluation in higher education

e-mail: matsushita.kayo.7r \*kyoto-u.ac.jp



**Assoc. Prof. Mana TAGUCHI**

Research focus:  
Educational technology

e-mail: taguchi.mana.3z \*kyoto-u.ac.jp



**Assoc. Prof. Hiroyuki SAKAI**

(Institute for Liberal Arts and Science)  
Research focus:  
Educational technology, psychological  
acoustics

e-mail: sakai.hiroyuki.2v \*kyoto-u.ac.jp

(replace \* with @)



**Prof. Toru IIYOSHI**

(Academic Center for Computing  
and Media Studies)

Research focus:  
Educational innovation, higher education systems

e-mail: iiyoshi.toru.6m \*kyoto-u.ac.jp



**Assoc. Prof. Machi SATO**

Research focus:  
Higher education studies, academic  
professions and identities, and university  
reforms

e-mail: sato.machi.5r \*kyoto-u.ac.jp



**Junior Assoc. Prof.  
Thomas David BROTHERHOOD**

Research focus:  
Higher Education Studies, Migration Studies

e-mail: brotherhood.thomas.4v \*kyoto-u.ac.jp





## Interdisciplinary Studies in Education Division

# Global Education Office

<https://global.educ.kyoto-u.ac.jp/>

Launched in April 2017, the **Global Education Office**, as an interdisciplinary teaching and research hub, is driven by a mission to nurture tomorrow's leaders who are equipped with a progressive, innovative, and global mindset. The office has two major functions. The *Creative Research and Development Branch* is to develop Japanese models of educational culture and to respond to emerging research areas. The *International Education Branch* supports implementation and development of international education curricula. These efforts are made possible through extensive collaborations with domestic and international partners in academia and industries.



**Head of Office**  
**Prof. Hirotaka NANBU**

Research focus:  
Comparative education, higher education in East Asia  
e-mail: nanbu.hirotaka.5m \*kyoto-u.ac.jp



**Junior Assoc. Prof. Joonha PARK**

Research focus:  
Cross-cultural psychology, self, well-being, acculturation, environmental issues  
e-mail: park.joonha.6n \*kyoto-u.ac.jp

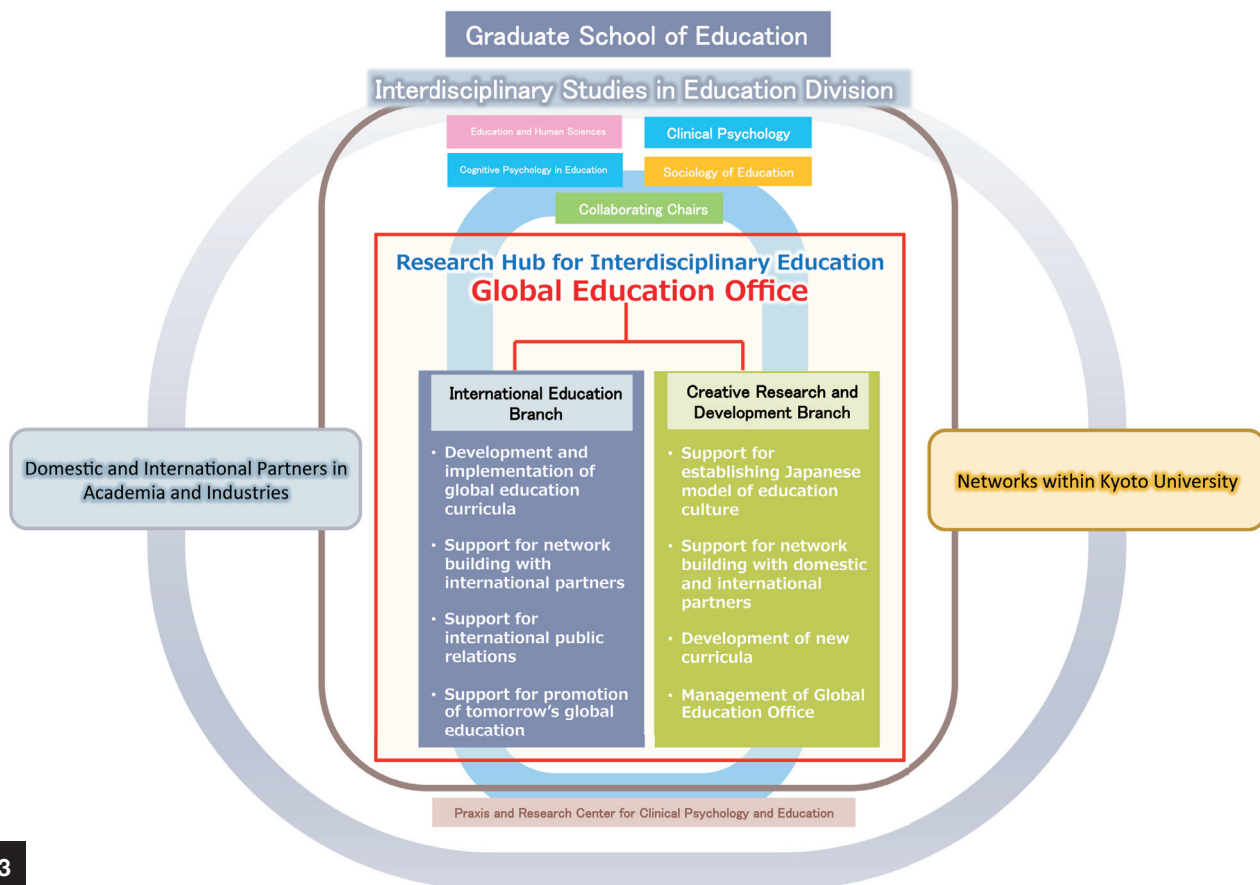


**Assist. Prof. Jieli ZHANG**

Research focus:  
Comparative education, higher education, higher vocational education

e-mail: chou.ketsurei.4h \*kyoto-u.ac.jp

(replace \*with@)



## Interdisciplinary Studies in Education Division

### IT Related



#### **Assist Prof. Satoru NISHIYAMA**

Research focus:  
Cognitive psychology, philosophy of psychology

e-mail: nishiyama.satoru.2u \*kyoto-u.ac.jp



#### **Program-Specific Assist. Prof. Kexin FENG**

Research focus: Sociology of Education:  
Cultural Sociology and Gender Studies

e-mail: feng.kexin.4j \*kyoto-u.ac.jp

(replace \* with @)

### Education and Research Services Related

#### **Program-Specific Assist. Prof. Takahito SAITO**

Research focus:  
Criminology, sociology of education,  
sociology of juvenile delinquency

e-mail: saito.takahito.6u \*kyoto-u.ac.jp







# **Faculty of Education**

**Studies on Educational Foundations**

**Educational Psychology**

**Interdisciplinary Studies of Educational Systems**



The Faculty of Education aims at nurturing individuals with expert knowledge about intersections of human minds, human relations, and social foundations of education. More precisely, the faculty's mission is to foster individuals who are prepared to address human, social, and educational challenges through global perspectives, critical thinking skills, and a deep sense of humanity. Undergraduate students enrolled in the Faculty of Education choose one of the three specialty categories in their third year as they work toward their graduation thesis.

### **Studies on Educational Foundations**

Specialty areas in this category include but are not limited to educational principles, educational philosophy, educational human studies, clinical education studies, educational history, pedagogy, curriculum theories, learning theories, student guidance theories, developmental, and educational theories for children with disabilities.

### **Educational Psychology**

Specialty areas in this category include but are not limited to educational psychology, cognitive psychology, clinical psychology, personality psychology, developmental psychology, child and adolescent psychology, psychology of people with disabilities, social psychology, and educational assessment and evaluation.

### **Interdisciplinary Studies of Educational Systems**

Specialty areas in this category include but are not limited to sociology of education, sociology of culture, historical sociology, sociology of crime and deviance, social research, social education, media culture theories, cultural policy, community education, library science, comparative education, educational administration, and educational systems.



# Affiliated Centers and Facilities

## Center for Counseling and Psychotherapy

Initially founded in 1953, the center acquired a full accreditation status from MEXT in April 1980, as the first outpatient counseling service center of its kind in national universities. The center has played a leading role in professional psychological training through outpatient services specialized in assessment and treatment of a variety of psychological concerns in people from all walks of life. Each year, more than 60 staff, primarily advanced graduate students supervised by our faculty members and practicing clinicians, serves more than 3,700 hours or 250 cases.



## Graduate School and Faculty of Education Library

The library owns more than 198,515 books, 3,331 journals, and archival data in various fields, including clinical, cognitive, developmental, and educational psychology, as well as sociology, philosophy, and library science (as of April 2025).



## Center for Collaboration in Innovation and Educational Practice

Established in April 2007, the center organizes cross-disciplinary teams to find solutions for issues surrounding education through the lens of two axes: nurturing vitality (psychological aspects) and competencies (academic aspects).



E.FORUM is a platform where educational professionals, researchers, and others gather, interact, and work towards mutually improving educational competencies.

## Departmental Publication

The school publishes the following periodicals:

- *Kyoto University Research Studies in Education*
- *The Annual Bulletin of Praxis and Research Center for Clinical Psychology and Education*
- *Socio-Cultural Studies of Education*
- *Journal of Lifelong Education Field Studies*
- *Reviews in Educational Administration and Finance*
- *Record of Clinical-Philosophical Pedagogy*



# International Outlook

Our school has constantly pursued educational and research opportunities for faculty members and students to expand their horizons locally, nationally, and globally.

## International Students (as of April 2025)

Region & Country		Undergraduate Students	Graduate Students	Research Students	Total
Asia	China		14	3	17
	Hongkong		1		1
	Indonesia	1			1
	Malaysia	1			1
	Myanmar		1		1
	Sri Lanka		1		1
	Taiwan		5		5
	Thailand	1			1
	Vietnam	2			2
Europa	Finland	1			1
	France			1	1
	Romania			1	1
Central & South America	Brazil		1		1
North America	USA	1	1	1	3
Total		7	24	6	37

## International Partners with Academic Exchange Agreements (as of April 2025)

Departmental agreements enable active faculty and student exchanges between our school and partner institutes across the globe.

Region & Country		Partner Universities and Institutes
Asia	China	National Institute of Education Sciences (2006)
		Faculty of Education, Beijing Normal University (2006)
	Korea	Department of Education, Seoul National University (2011)
Europe	Germany	Faculty of Educational Sciences and Psychology, TU Dortmund University (2016)
	UK	Department of Psychology, Lancaster University (2006)
		Nissan Institute of Japanese Studies, University of Oxford (2018)
North America	USA	Harvard-Yenching Institute (1984)
		University of California, Los Angeles (1986)

## International Academic Collaborations

Extensive collaborations with prestigious overseas institutions serve as a solid foundation for education and research.



International Joint Workshop with Institute of Education, University College London



Academic collaboration with Faculty of Education, Beijing Normal University



Student Exchange with Faculty of Educational Sciences and Psychology, TU Dortmund University



Academic collaboration with Faculty of Education, Seoul National University

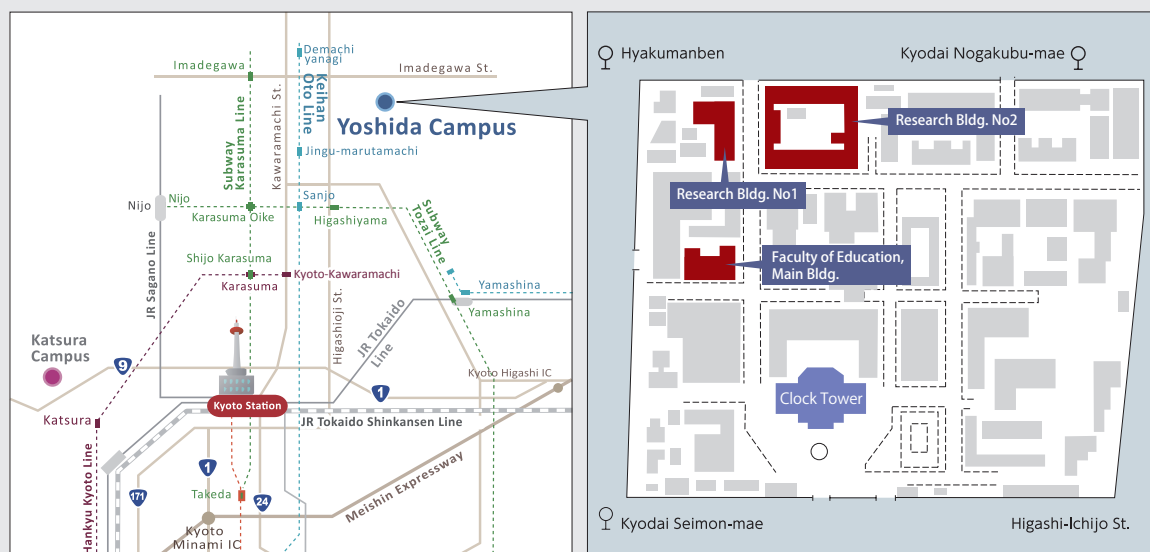




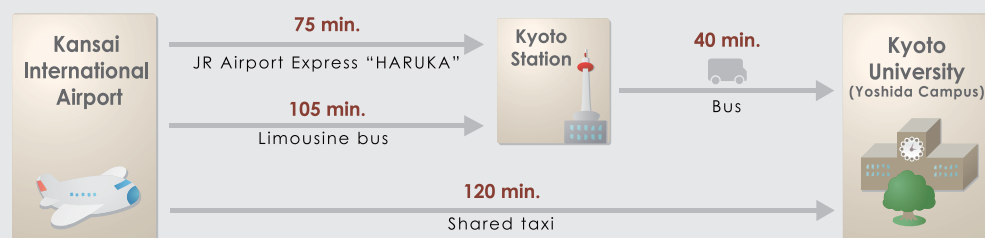
京都大学  
KYOTO UNIVERSITY

## Access

### Map



### From the Airport



### From Kyoto Station By Bus

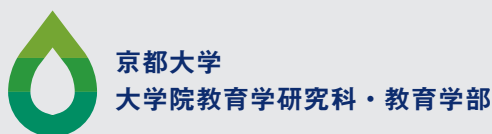
Station	Bus Stop	Bus #	Bound for	Get off at	Approx. minutes
Kyoto JR/Kintetsu	Kyoto Eki-mae	7	Kinrin-Shako-mae via Kawaramachi-dori St.	Hyakumanben	40
		206	Kitaoji Bus Terminal via Higashiyama-dori St.	Kyodai Seimon-mae	

## Contact

### Graduate School of Education and Faculty of Education, Kyoto University

[Address] Yoshida Honmachi, Sakyo-ku, Kyoto 606-8501, Japan

[URL] <https://www.educ.kyoto-u.ac.jp/en/>



Global Education Office  
Graduate School of Education, Kyoto University